

USS LITTLE ROCK

(CLG-4)

GUIDED MISSILE LIGHT CRUISER



COMMISSIONING

JUNE 3, 1960

PHILADELPHIA NAVAL SHIPYARD
PHILADELPHIA, PENNSYLVANIA

USS LITTLE ROCK

(CLG-4)

GUIDED MISSILE LIGHT CRUISER



COMMISSIONING

JUNE 3, 1960

PHILADELPHIA NAVAL SHIPYARD

PHILADELPHIA, PENNSYLVANIA

The Commissioning ceremony marks the initiation of a ship into the Operating Forces of the United States Navy. At the moment of breaking her commission pennant, U.S.S. LITTLE ROCK (CLG-4) then becomes the responsibility of her Commanding Officer, Captain Jewett O. Phillips, Jr., USN, who, together with the ship's company, has the duty of making and keeping her constantly ready for any service demanded by our country in peace or war.

U. S. S. LITTLE ROCK

(CLG-4)



Built by

CRAMP SHIPBUILDING COMPANY

Philadelphia, Pennsylvania



(CL-92)

Keel Laid 6 March 1943
Launched 27 August 1944
Commissioned 17 June 1945
Decommissioned 24 June 1949



Converted to

GUIDED MISSILE LIGHT CRUISER

by

New York Shipbuilding Corporation

Camden, New Jersey



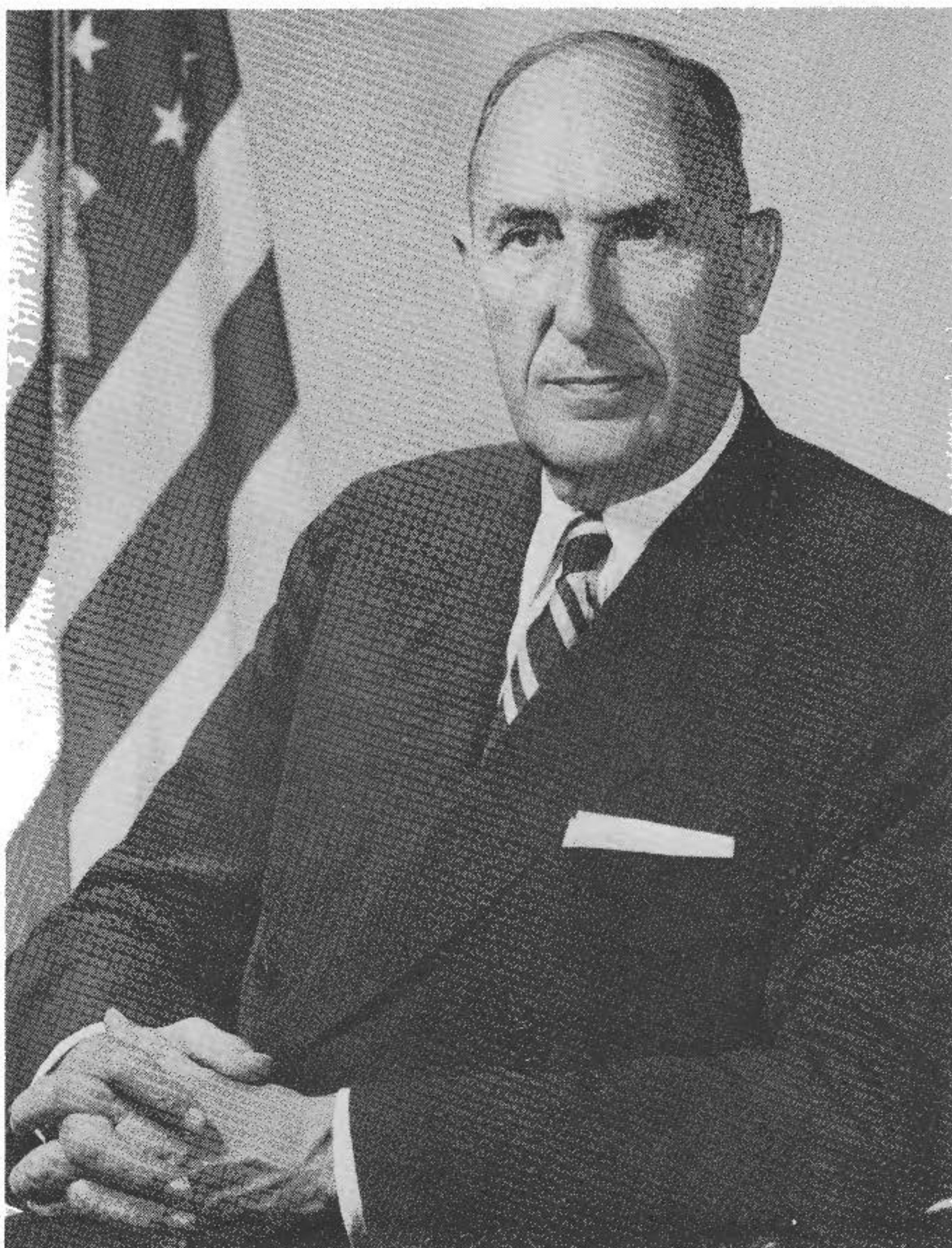
Recommissioned as CLG-4

3 June 1960



Philadelphia Naval Shipyard

Philadelphia, Pennsylvania



The Honorable
WILLIAM B. FRANKE
Secretary of the Navy



THE SECRETARY OF THE NAVY
WASHINGTON

4 May 1960

My dear Captain Phillips:

I wish to extend my sincere best wishes to you and the officers and men of the USS LITTLE ROCK (CLG-4) on her commissioning.

USS LITTLE ROCK (CLG-4) is another step forward in the development of combatant ships and is the cumulative result of the combined efforts of many segments of the United States Navy. Upon her and all the ships of the Fleet lie the hopes and aspirations of the navy. With her over-all strength featured by her superior air defense capabilities, her very existence is a further strong deterrent to aggression.

It has been said that a Navy is only as good as its ships. While this is true, a ship can be only as good as its crew. This has a more specific meaning because before a Navy can be effective, each ship must train for the highest possible combat readiness. To achieve this is the goal before you. I am confident that under the leadership and personal example of you and your officers the highest standards of moral behavior and devotion to duty will be achieved, and that LITTLE ROCK will meet the challenge of her tasks in defense of our country in such manner as to reflect the highest credit upon the U. S. Navy.

Sincerely yours,

W.B. Franke

Captain Jewett O. Phillips, Jr., USN
Prospective Commanding Officer
USS LITTLE ROCK (CLG-4)
c/o Supervisor of Shipbuilding
New York Shipbuilding Corporation
Camden, New Jersey



ADMIRAL ARLEIGH A. BURKE, USN
Chief of Naval Operations



CHIEF OF NAVAL OPERATIONS

13 May 1960

Dear Captain Phillips:

On the occasion of the commissioning of your ship, USS LITTLE ROCK (CLG-4), I extend to you my congratulations on your new command and wish you, your officers and crew the best of luck.

LITTLE ROCK is the first of the TALOS guided missile cruisers fitted as a fleet flag ship. Its armament will greatly increase the anti-aircraft capability of our Navy. The characteristics of your ship reflect the technological advances which have significantly improved the combat capability of the Navy through improved weapons and other epochal changes in combatant ships.

It is your privilege to command one of the finest ships of the finest Navy on earth. The duties and responsibilities which will rest upon your shoulders during the time you have command will be heavy indeed. It will be your duty to weld the fine officers and men who compose your crew into a combat unit ready to carry out any of the many missions which may be assigned your ship. It will be your responsibility to generate the teamwork, the personal skill, and the individual devotion to duty making LITTLE ROCK the effective fighting unit that she deserves to be. It will be your duty to ensure that each individual who has the honor to serve in your ship will have the personal satisfaction of being an important part of a successful fighting organization of the United States Navy.

As Captain of your powerful ship, you will realize that you, your ship and each individual in her must be able to respond to any crisis with which the United States may be confronted. You and each one of your ship's company must be able to act swiftly and intelligently just as other men have done in U.S. men-of-war before you. By so doing you will make a personal contribution to the Navy's rich and meaningful tradition. To you and each member of your ship's company, a fair wind and God's help in the many tasks which you will encounter.

Sincerely yours,

Arleigh Burke
ARLEIGH BURKE

Captain Jewett O. Phillips, Jr., USN
Prospective Commanding Officer
USS LITTLE ROCK (CLG-4)
c/o Supervisor of Shipbuilding
New York Shipbuilding Corporation
Camden, New Jersey



REAR ADMIRAL JOHN McNAY TAYLOR, USN
Commander, Cruiser Force, U. S. Atlantic Fleet



REAR ADMIRAL CHARLES H. LYMAN, USN
Commandant, Fourth Naval District

SENATOR J. WILLIAM FULBRIGHT

J. WILLIAM FULBRIGHT, Democratic Senator from Arkansas, was born at Sumner, Missouri, on April 9, 1905. The following year, his parents moved to Fayetteville, Arkansas, which is still his home.

He attended public schools in Fayetteville before entering the University of Arkansas at the age of 16, and was graduated from the University in 1925 with a B.A. degree in political science.

Before graduating from the University of Arkansas, he won a Rhodes Scholarship; and so continued his study of history and political science at Pembroke College, Oxford University, for three years, graduating with an A.B. degree in 1928. He received an M.A. degree from Oxford in 1931 and in 1953 was awarded an honorary doctorate degree from that institution.

After completing his studies at Oxford, he visited many of the countries of Europe, then returned to the United States to begin the study of law at George Washington University Law School. He received an L.L.B. degree with distinction in 1934.

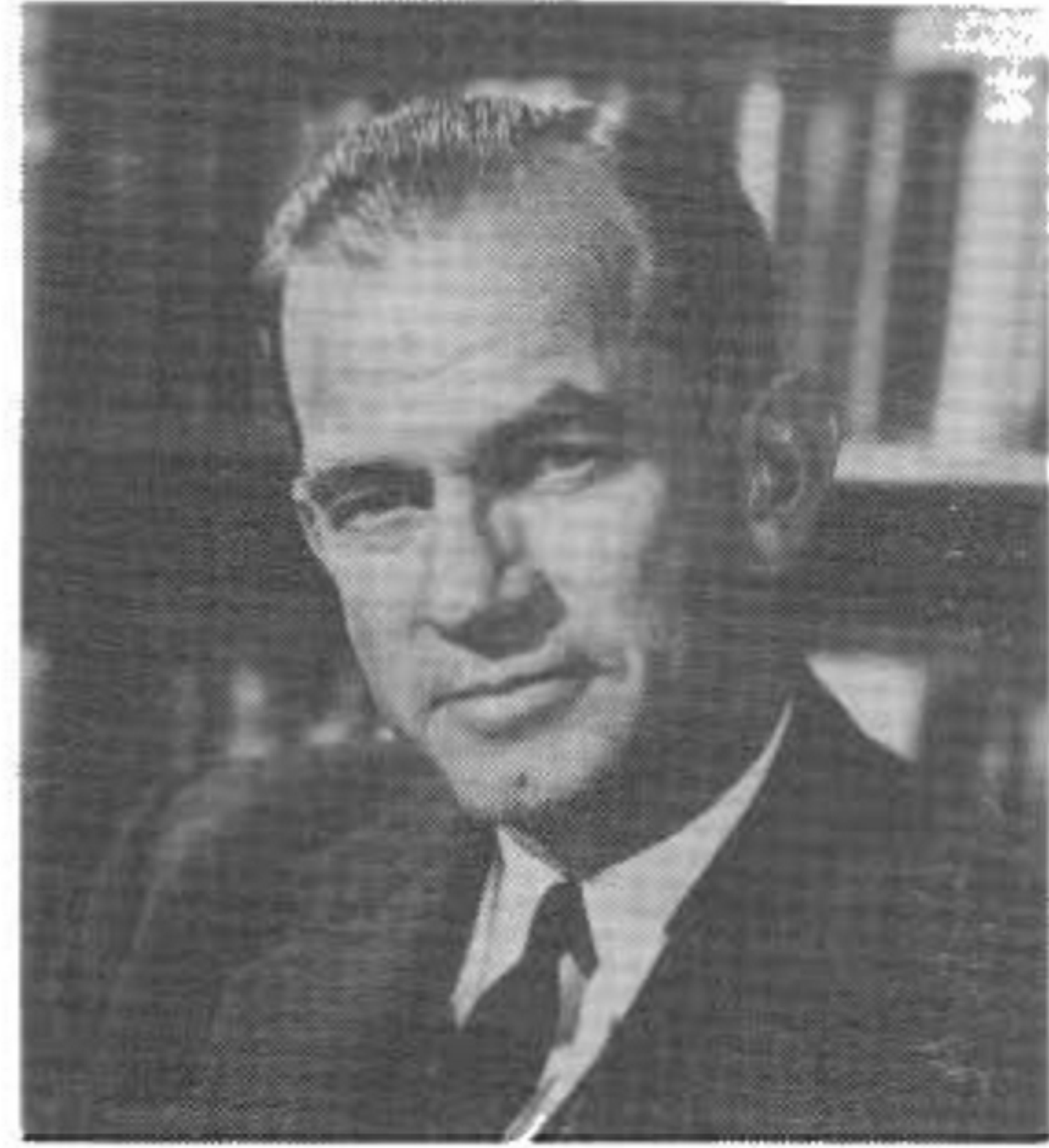
Accepting a position as special attorney in the Anti-Trust Division of the Department of Justice, he stayed there until 1935, when he became a lecturer-in-law at George Washington University. He returned to the University of Arkansas as a member of the law school in 1936 and served in that capacity until 1939. In that year, he was appointed President of the University of Arkansas at the age of 34.

In 1942 he entered politics by running for Congress in the Third District of Arkansas, and was elected by a large majority. Soon after he entered the House he became a member of the Foreign Affairs Committee and introduced the "Fulbright Resolution," which passed the House of Representatives on September 21, 1943. The Resolution called for the participation by the United States in an international organization to maintain the peace, and is generally considered to be the forerunner to establishment of the United Nations.

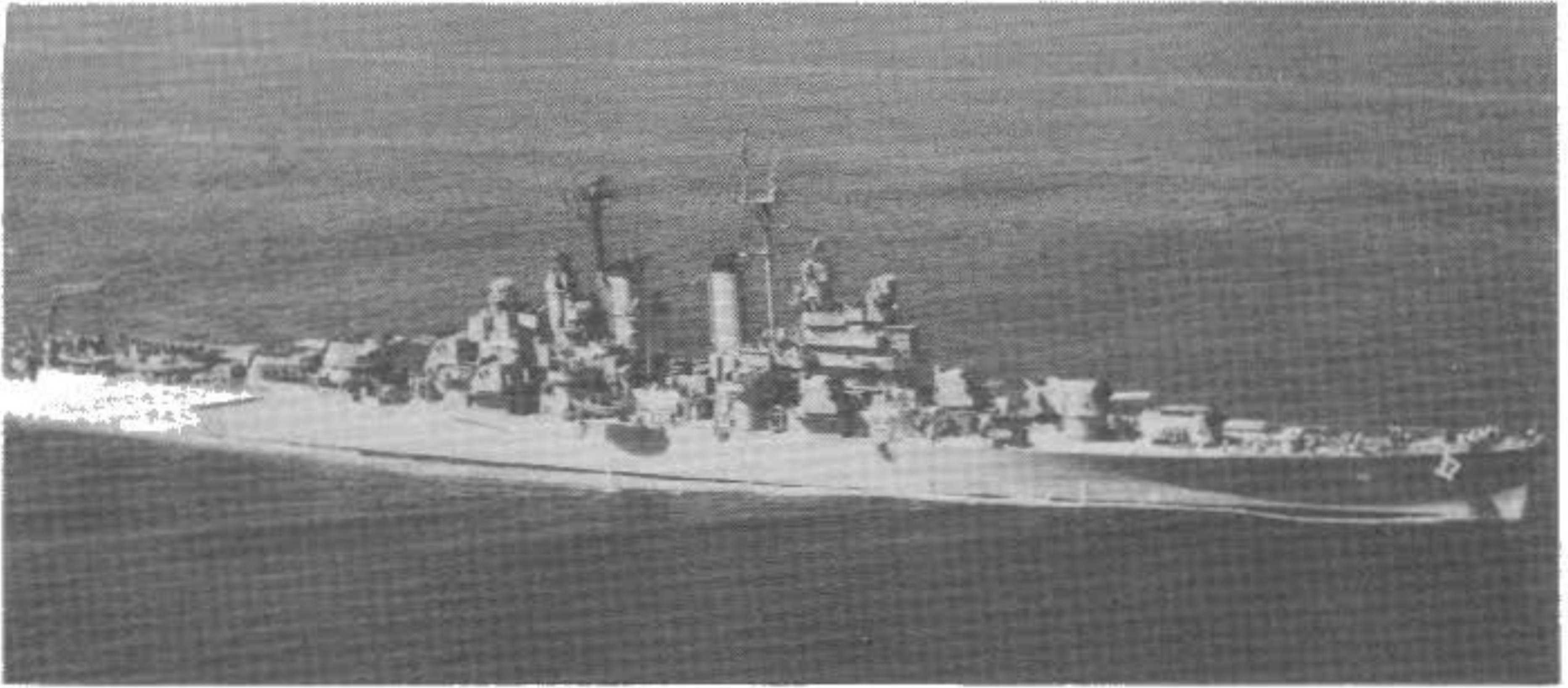
In 1944, at the age of 39, he was elected to the U. S. Senate.

Chairman of the Senate Banking and Currency Committee from 1955 to 1959, he relinquished that post to become Chairman of the Senate Committee on Foreign Relations.

He is married to the former Elizabeth Kremer Williams of Philadelphia; and has two daughters, Elizabeth and Roberta.



The Honorable
J. WILLIAM FULBRIGHT
United States Senator from Arkansas



U. S. S. LITTLE ROCK (CL-92)

History of the U. S. S. Little Rock

The U. S. S. LITTLE ROCK, first ship of the United States Navy to bear the name of the capital city of Arkansas, was built by the Cramp Shipbuilding Company of Philadelphia during World War II. Her keel was laid March 6, 1943 and she was launched August 27, 1944 under the sponsorship of Mrs. Sam J. Wassell, wife of a member of the Little Rock City Council. LITTLE ROCK joined the active fleet as CL-92 in commissioning ceremonies in Philadelphia on June 17, 1945.

Commissioned too late to participate actively in World War II operations, LITTLE ROCK served as an Atlantic Fleet training ship during the years immediately following the war. In the course of several training cruises, LITTLE ROCK visited 28 nations, carrying the American flag to Scandinavia, Western Europe, the Mediterranean area and to South America. During this time, hundreds of Reserve Officers, men and midshipmen had the benefit of training in one of the Navy's newest ships.

On June 24, 1949, at the direction of the Secretary of the Navy, LITTLE ROCK was decommissioned and placed in the New York group of the Reserve Fleet.

LITTLE ROCK was delivered from the Reserve Fleet to the New York Shipbuilding Corporation, Camden, New Jersey, in January 1957, to begin a three year conversion, which was to make her the modern fighting ship she is today.

Once again the U. S. S. LITTLE ROCK is in Philadelphia to be commissioned into the active forces of the United States Navy.

Today's LITTLE ROCK bears little resemblance to CL-92. The enlarged superstructure is the most obvious difference. The most important difference—the reason for LITTLE ROCK's conversion—is the TALOS missile system.

The conversion from CL-92 to CLG-4 included the removal and re-arrangement of whole sections of the ship's superstructure to provide for missile guidance equipment, and for handling, launching, and stowage of missiles.

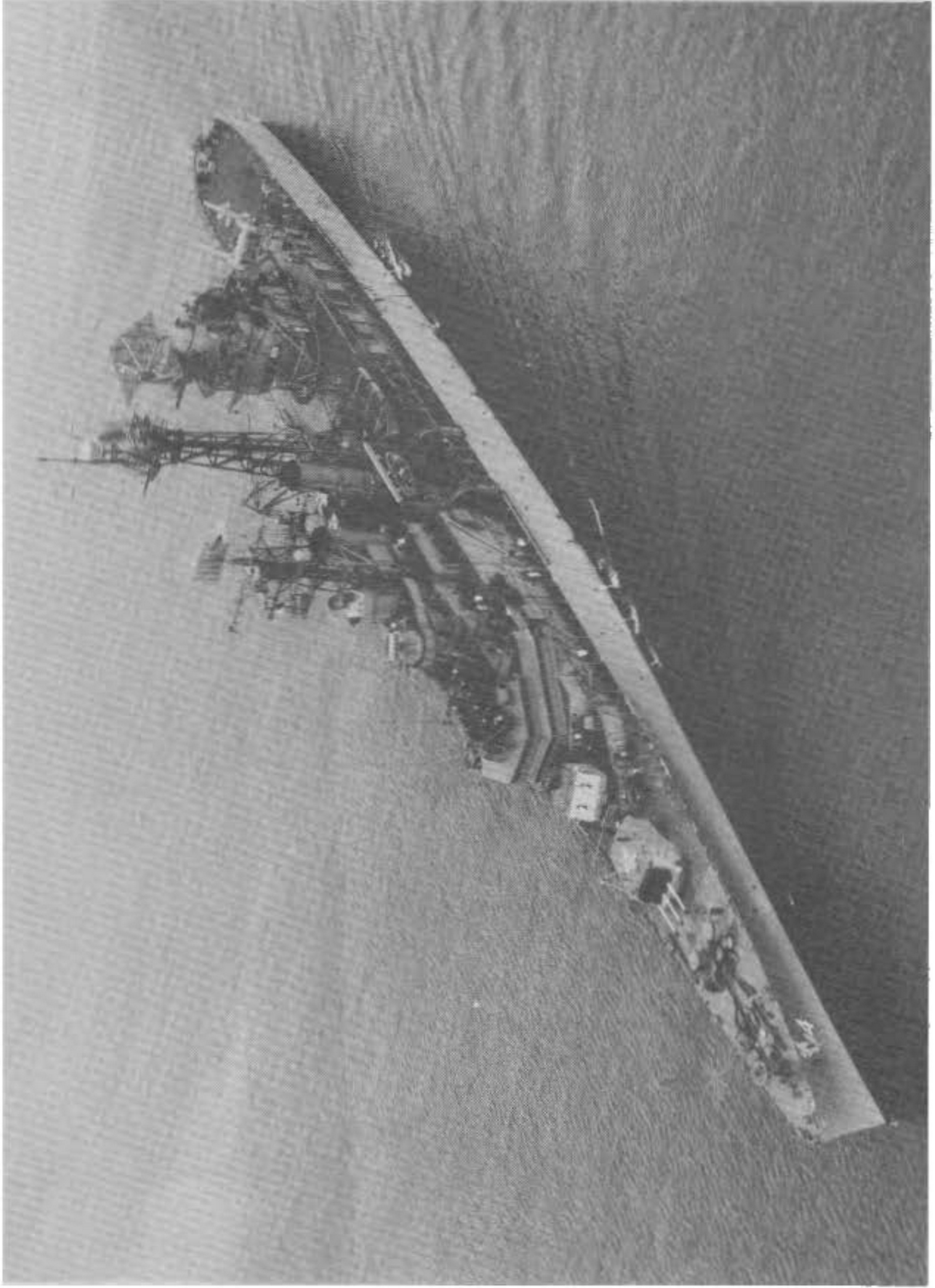
In addition to being a guided missile warship, LITTLE ROCK is now equipped to serve as a Fleet Flagship. Accommodations for a Fleet Commander and his staff and the special communications needed to direct Fleet Operations have been incorporated into the ship as part of the conversion.

The new missiles are housed on the main deck where the after six-inch gun turrets were formerly located. Also on the main deck are the missile stowage and ready service areas where TALOS missiles will be prepared for firing. LITTLE ROCK's superstructure literally bristles with radars and associated electronic equipment needed for her communications and anti-air warfare systems.

U. S. S. LITTLE ROCK is a major addition to the Navy's rapidly expanding fleet of ships armed with guided missiles capable of delivering a nuclear punch.



U. S. S. LITTLE ROCK (CLG-4)



U. S. S. LITTLE ROCK (CLG-4)

COMMANDING OFFICER, U. S. S. LITTLE ROCK (CLG-4)

Captain JEWETT O. PHILLIPS, JR., was born in Columbia, Missouri, on December 27, 1913, son of Mrs. Grace E. Phillips and the late Jewett O. Phillips. He is a graduate of Hickman High School, Columbia, and attended the University of Missouri before his appointment to the U. S. Naval Academy. He was graduated and commissioned Ensign in the U. S. Navy on June 4, 1936.

During his career, Captain Phillips has served in numerous Naval sea and shore assignments, including duty on the staffs of the Commander in Chief of the Pacific Fleet, Commander, Third Fleet, and in the Bureau of Ordnance. He is particularly experienced in the fields of Naval ordnance, weapons development, and anti-submarine warfare. His most recent assignment was as Branch Head and Director of the Naval Ordnance Shore Establishment Division in the Bureau of Ordnance.

Captain Phillips' first assignment was aboard the USS IDAHO for duty in the gunnery, communications, and engineering departments as a junior officer until July 1938.

He then reported to the heavy cruiser AUGUSTA, and later, while Main Battery and Fire Control Officer, witnessed the historic signing of the Atlantic Charter in Argentia, Newfoundland.

Later, Captain Phillips attended the Naval Postgraduate School for a year of instruction in Ordnance Engineering. In 1944, he received a Master of Science in Metallurgical Engineering from Carnegie Institute of Technology at Pittsburgh.

In 1946, Captain Phillips joined the staff of Commander, Third Fleet as Operations Officer. Eleven months later, he reported to the Naval Gun Factory in Washington as Officer in Charge of the Materials Laboratory. After a course at the Armed Forces Staff College in Norfolk, Virginia, he became the Operations Officer of the cruiser SALEM, flagship of the Sixth Fleet.

Captain Phillips assumed command of his first ship, the destroyer ROBERT H. McCARD, in June of 1951. After his detachment 12 months later, he reported to the Naval Ordnance Laboratory for duty in the field of weapons development. Later, he again became a student, attending the National War College in Washington, D. C. followed by duty in the Atlantic Fleet as Commander Destroyer Division 42. While in this capacity, he attained his present rank of Captain.

During the last five years, Captain Phillips, in addition to his tour of duty at the Bureau of Ordnance, has served on the staff of the Commander-in-Chief of the Pacific Fleet, and has commanded the attack transport OKANOGAN.

In January 1960, Captain Phillips received orders designating him as the Prospective Commanding Officer of the U. S. S. LITTLE ROCK (CLG-4). He officially assumes command today at the commissioning ceremony.



Captain JEWETT O. PHILLIPS, JR., USN
Commanding Officer

U. S. S. LITTLE

Commissioning



BAND SELECTIONS

Fourth Naval District Band

INVOCATION

Commander JAMES R. McGRATH, CHC, USN

INTRODUCTION OF DISTINGUISHED GUESTS

Rear Admiral CHARLES H. LYMAN, USN
Commandant, Fourth Naval District

PRINCIPAL ADDRESS

Honorable J. WILLIAM FULBRIGHT
United States Senator from Arkansas

COMMISSIONING DIRECTIVE

REAR ADMIRAL CHARLES H. LYMAN, USN

COMMISSIONING

The playing of the National Anthem
The Hoisting of the National Ensign, Union Jack and
Commission Pennant

ACCEPTANCE OF COMMAND

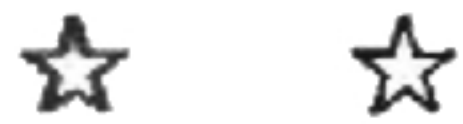
Captain JEWETT O. PHILLIPS, JR., reads his orders and
assumes command

SETTING THE WATCH

Commander FRANCIS J. BERRY, USN
Executive Officer

ROCK (CLG-4)

ing Ceremony



RENDERING OF HONORS

Commanding Officer gives order for the personal flag of the UNDER SECRETARY OF THE NAVY to be broken at the truck with appropriate honors

REMARKS

Captain JEWETT O. PHILLIPS, JR., USN
Commanding Officer

PRESENTATION

Honorable WERNER C. KNOOP
Mayor of the City of Little Rock

BENEDICTION

Commander MALCOLM A. CARPENTER CHC, USN

BAND SELECTIONS

Fourth Naval District Band

All guests are invited to inspect the ship after completion of the ceremony. Guests are requested to retain their seats until escorted on board by ushers.



CDR C. P. ROZIER, USN
Operations



CDR F. J. BERRY, USN
Executive Officer



CDR W. J. HEFFINGER, USNR
Gunnery



LCDR G. L. NELSON, USN
Engineering



CDR J. R. McGRATH, USN
Chaplain



LCDR W. McHENRY, JR., USN
Supply



LCDR R. V. HIRSTEIN, USN
Navigation



LCDR J. L. YARBROUGH, USN
Dental



LCDR V. B. FITCHETT, USN
Medical

U. S. S. LITTLE ROCK (CLG-4)

OFFICERS



COMMANDING OFFICER

CAPTAIN J. O. PHILLIPS, JR., USN

EXECUTIVE OFFICER

COMMANDER F. J. BERRY, USN

EXECUTIVE

CDR J. R. McGRATH (ChC) Chaplain
LTJG C. H. CARPENTER Administrative Assistant
ENS E. N. COLLINS Personnel Officer
ENS H. K. ROBINSON Training and Education Officer
CHSHIPCLK W. R. ABNEY Ship's Secretary

OPERATIONS

CDR C. P. ROZIER Operations Officer
LT R. E. MARRINER CIC Officer
LT R. A. WHEELER Communications Officer
LT T. W. MANDUCA Assistant CIC Officer
LT H. L. BRIDENSTINE Electronics Material Officer
LTJG J. J. GROSSBAUM CIC Watch Officer
LTJG M. HANNAN CIC Watch Officer
LTJG A. D. McNELLY Assistant Electronics Material Officer
LTJG R. A. GARMAN, JR. Radio Officer
ENS C. E. DANIELS Registered Publications Officer
ENS H. T. STANLEY, JR. Communications Watch Officer
ENS J. J. NICHOLAS Signal Officer
ENS G. A. JOCHER, JR. CIC Watch Officer
ENS J. S. MADDEN CIC Watch Officer
ENS R. E. RICE CIC Watch Officer
CHELECTECH J. A. MADEWELL Assistant Electronics Material Officer

NAVIGATION

LCDR R. V. HIRSTEIN Navigator

GUNNERY

CDR W. J. HEPFINGER Gunnery Officer
LCDR W. A. TEASLEY Assistant Gunnery Officer
LT L. H. GOLDBECK, JR. Missile Officer
LT J. H. FORRESTER Fire Control Officer
LT F. L. STEPHENS "F" Division Officer
LTJG B. G. THOMPSON First Lieutenant
LTJG C. E. POTTER Gun Battery Officer
LTJG W. J. DONLAN Assistant Missile Officer

GUNNERY (Continued)

LTJG W. PIETKIEWICZ Third Division Officer
LTJG R. M. EADE Third Division Junior Officer
LTJG G. A. SISSEL First Division Officer
LTJG M. STITELMAN Second Division Officer
LTJG D. D. WALKER Weapons System Direction Officer
LTJG C. R. WHITE Gun Control Officer
ENS N. E. ABRAMS Launcher Officer
ENS A. M. FRANKEL Gunnery Administrative Assistant
ENS C. M. PHILLIPS Missile Computer Officer
ENS P. F. SALA Missile Test Officer
ENS C. H. ROWE, II Missile Radar Officer
ENS C. R. WALLIN "F" Division Junior Officer
ENS C. R. WEYMOUTH Missile Test Officer
ENS D. C. WOLFE Missile Test Officer
CHSURORDTECH W. W. JOSE Gun Battery Ordnance Gunner
CHBOSN R. B. COMPANION Ship's Boatswain
SURORDTECH C. L. DANIEL Missile Ordnance Gunner
ORDCONTECH J. L. BELL Fire Control Officer
ELECTECH G. EARLY, JR. Missile Repair Officer

ENGINEERING

LCDR G. L. NELSON Engineering Officer
LCDR D. J. SPACE Damage Control Assistant
LT J. L. KNEPLER Main Propulsion Assistant
LTJG J. D. McNEILL Repair Officer
LTJG R. J. LARKIN Electrical Officer
LTJG F. J. WADE Boiler Officer
ENS D. E. BABB Division Officer
ENS W. E. CLAFLIN "E" Division Officer
ENS D. J. GREAVES "B" Division Junior Officer
ENS A. PRASCIUNAS Main Engine Officer
ENS H. RAY, JR. Ship's Carpenter
CHELEC H. A. HOLM "E" Division Electrician
CHMACH C. R. SHAFFER "M" Division Machinist
MACH J. F. FAGAN "A" Division Machinist

MEDICAL

LCDR V. B. FITCHETT (MC) Medical Officer

DENTAL

LCDR J. L. YARBROUGH (DC) Dental Officer

SUPPLY

LCDR W. McHENRY, JR. Supply Officer
LT R. L. BATES Stores Officer
ENS K. D. WILSON Disbursing Officer
CHSUPCLK T. PHIFER Sales and Services Officer
CHSUPCLK H. L. OWENS Commissary Officer

MARINE DETACHMENT

CAPT J. W. DAVIS, USMC Commanding Officer
FIRST LIEUTENANT C. E. MUNDY, JR, USMC Executive Officer

U. S. S. LITTLE ROCK (CLG-4)

CHIEF PETTY OFFICERS

| | |
|----------------------|---|
| BALLENTINE, C. E. | Master Chief Boilerman |
| LOCKWOOD, W. | Senior Chief Damage Controlman |
| McEACHERN, F. M. | Senior Chief Storekeeper |
| WILLIAMS, L. | Senior Chief Radarman |
| ANDRASKI, P. | Chief Hospital Corpsman |
| BANKS, R. L. | Chief Electrician's Mate |
| BARTON, M. | Chief Guided Missileman |
| BELGARD, M. A. | Chief Machinist's Mate |
| BOYER, L. S. | Chief Gunner's Mate |
| BRISTLE, E. D. | Chief Machinist's Mate |
| BURNS, J. T. | Chief Machinist's Mate |
| CONKLIN, R. L. | Chief Commissaryman |
| DRISCOLL, R. | Chief Interior Communications Electrician |
| FLORA, R. B. | Chief Gunner's Mate |
| FRAKES, A. C. | Chief Boilerman |
| GERMERSHAUSEN, P. J. | Chief Radioman |
| HALE, J. G. | Chief Fire Control Technician |
| HAMLIN, R. L. | Chief Shipfitter |
| HARRIS, R. A. | Chief Fire Control Technician |
| JEFFERIS, R. L., JR. | Chief Electronics Technician |
| KELLY, J. | Chief Electronics Technician |
| KIRKS, W. J. | Chief Boatswain's Mate |
| KREHBIEL, D. M. | Chief Fire Control Technician |
| LAROCHE, A. G. | Chief Photographer's Mate |
| MATTHIESSEN, J. P. | Chief Guided Missileman |
| MENDICINO, J. A. | Chief Disbursing Clerk |
| MENEELY, A. K. | Chief Radarman |
| MOPPIN, C. | Chief Gunner's Mate |
| PAGE, C. W., JR. | Chief Commissaryman |
| PARSON, W. L. | Chief Boilerman |
| PRUITT, M. E. | Chief Gunner's Mate |
| RAHL, R. J. | Chief Boatswain's Mate |
| ROUCHE, J. C. | Chief Yeoman |
| RICHARD, J. A. | Chief Machinist's Mate |
| SALISBURY, B. C. | Chief Machinist's Mate |
| SENTELL, J. W. | Chief Signalman |
| STAHUSKY, W. W. | Chief Damage Controlman |
| SWEET, J. H. | Chief Interior Communications Electrician |
| TIMMONS, R. L. | Chief Shipfitter |
| WALLACE, R. R. | Chief Boilerman |
| WHISMAN, R. A. | Chief Guided Missileman |
| WILLIAMS, B. L. | Chief Steward |
| WILSON, H. C. | Chief Radioman |
| WILSON, J. E. | Chief Personnelman |
| YATES, G. T. | Chief Ship's Serviceman |
| VALEGA, L. J. | Chief Radarman |

U. S. S. LITTLE ROCK (CLG-4)



EXECUTIVE STAFF

| | | | | | |
|---------------------|---------|---------------------|------|------------------|----|
| Bridges, T. | BM1 | Price, W. R. | PN3 | Leong, Y. Y. | SN |
| Rogers, T. | BM1 | Seay, L. G., Jr. | PNA3 | Martin, G. C. | SN |
| Seavey, A. A. | YN1 | Chavis, O. H. | YNSN | Moore, T. A. | SN |
| Wieder, K. R. | PN1 | Mason, E. M. | YNSN | Piasecky, T. A. | SN |
| Cordier, U. A. | BM2 | Borst, W. E. | SN | Salenik, S. R. | SN |
| Elton, D. E. | LI2 | Chastain, J. C. | SN | Spencer, K. R. | SN |
| Humphries, C. E. | TE(YN)2 | Cronin, D. H. | SN | Tucker, W. D. | SN |
| McKee, C. | GM2 | Donohoe, W. W. | SN | Volpe, W. | SN |
| Norton, T. H. | BM2 | Edwards, C. L. | SN | Berglas, F. E. | SA |
| Wells, R. F. | BT2 | Helfert, C. E. | SN | Greenheck, J. A. | SA |
| Malone, R. W. | JO3 | Judge, J. J. | SN | Lapore, F. | SA |
| McDaniel, C. R. Jr. | JO3 | Lammersfield, R. M. | SN | Schabla, D. J. | SA |
| Pletcher, T. P. | PN3 | Latshaw, L. N. | SN | Schiers, W. W. | SA |

OPERATIONS DEPARTMENT

| | | | | | |
|-----------------------|------|---------------------|------|--------------------|------|
| Adams, K. R. | AG1 | Dillow, P. J. | RM3 | Kelly, M. E. | RDSN |
| Ash, S. E. | RD1 | Evans, G. A. | RD3 | Kenney, A. J. | ETSN |
| Bullock, C. H. | SM1 | Finney, J. R. | SM3 | King, C. C. | ETSN |
| Casino, R. J. | RD1 | Foglia, D. L. | RM3 | Land, J. P. | ETSN |
| Dickey, H. | BM1 | Goodgion, D. J. | RM3 | Larkin, P. R. | ETSN |
| Elson, D. R. | ET1 | Hilgert, L. L. | RM3 | Mark, W. J. | RDSN |
| Hoshaw, E. I. | RD1 | Keeley, J. W. | RD3 | Marshall, B. R. | RDSN |
| Macciak, A. J., Jr. | TD1 | Kennedy, J. | BM3 | Morris, W. J., Jr. | ETSN |
| McMichael, J. E. | SM1 | Lamb, J. D. | BM3 | Mullins, J. | ETSN |
| Resch, D. J. | RM1 | Lauseigne, R. L. | RM3 | Murray, T. | RMSN |
| Williams, N. D. | RM1 | MacIntyre, D. W. | ET3 | Palazzo, F. I. | RMSN |
| Wimmer, J. C. | ET1 | McKerley, S. J. | ET3 | Pizzariella, J. | RDSN |
| Witherell, I. E., Jr. | RM1 | Michael, G. E., Jr. | RD3 | Rae, J. A. | RMSN |
| Crouch, J. L. | AG2 | Newcomb, P. T. | RM3 | Schuld, D. W. | RDSN |
| Cournoyer, J. V. | BM2 | Newcomer, D. C. | RM3 | Sebastian, J. E. | RDSN |
| Darrow, G. J. | ET2 | Roose, W. B. | RD3 | Shaughnessy, R. R. | RDSN |
| Faircloth, G. T. | RD2 | Rosone, J. | RM3 | Smith, R. L. | RDSN |
| Ferguson, J. L. | ET2 | Routh, J. R. | RM3 | Snow, R. D. | ETSN |
| Harkins, R., III | PH2 | Schutz, P. A. | RM3 | Southwood, F. A. | RMSN |
| Hasen, F. J. | RM2 | Stangel, R. F. | PHG3 | Stover, K. G. | RMSN |
| Haver, R. I. | RD2 | Woodard, N. O. | BM3 | Tidd, J. H. | RMSN |
| Kern, H. G. | SM2 | Ables, H. T., Jr. | RDSN | Tyson, J. G., III | RMSN |
| Nichols, M. A. | SM2 | Berry, F. E. | RDSN | Van Huesen, P. O. | RMSN |
| Oldford, E. A. | RD2 | Bykowski, L. A. | RMSN | Van Wagner, R. | RDSN |
| Price, G. J. | RM2 | Crowley, J. A. | RMSN | Webster, J. R. | ETSN |
| Quattrochi, C. W. | RM2 | Dowling, M. J. | ETSN | Welling, P. J. | RMSN |
| Smith, J. H., Jr. | RM2 | Eismann, W. H., Jr. | ETSN | Wichert, D. J. | ETSN |
| Stonehocker, E. W. | BM2 | Elkins, R. T. | ETSN | Wisniewski, E. M. | ETSN |
| Tahakjian, M. L. | SM2 | Elmore, H. R. | RDSN | Arey, T. W. | SN |
| Ackley, W. J. | RM3 | Frankie, G. A. | TDAN | Almon, G. W. | SN |
| Banks, J. E., III | ET3 | Franks, G. J. | RDSN | Baird, R. L. | SN |
| Barnes, J. M. | ETN3 | Freeman, M. D., Jr. | RDSN | Bischoff, J. | SN |
| Bruno, P. | RM3 | Fissel, J. H., Jr. | RMSN | Blasco, D. J. | SN |
| Bullock, R. D. | RM3 | Godbout, R. P. | RMSN | Brothwell, L. | SN |
| Carlisle, A. E. | YN3 | Grapes, D. R. | ETSN | Collins, R. F. | SN |
| Cassoli, R. L. | ET3 | Gregor, J. M. | AGAN | Cormier, R. F. | SN |
| Chiovari, A. J. | ET3 | Hammes, A. W., Jr. | ETSN | Crapoff, L. R. | SN |
| Deichmann, H. A. | SM3 | Jarvis, R. A. | RDSN | Crowder, D. R. | SN |

OPERATIONS DEPARTMENT (Continued)

| | | | | | |
|-----------------------|----|--------------------|------|--------------------|----|
| DeSimmon, L. J. | SN | Saitta, J. | SN | Fasone, R. A. | SA |
| Drellos, G. P. | SN | Santi, J. R. | SN | Fyke, T. L. | SA |
| Ferris, H. W. | SN | Schmoldt, J. P. | SN | Geffe, A. H. | SA |
| Foster, J. E. | SN | Scutari, S. R. | SN | Gisen, D. E. | SA |
| Hall, B. L. | SN | Strohm, M. H. | SN | Griesbach, W. G. | SA |
| Hatcher, H. E., Jr. | SN | Tucker, M. F., Jr. | SN | Hammond, M. W. | SA |
| Hooker, W., Jr. | SN | VanBilliard, H. J. | SN | Hart, G. M. | SA |
| King, L. L. | SN | Waters, J. A. | SN | Heeley, R. E., Jr. | SA |
| Lamb, W. P. | SN | Woodyard, R. C. | SN | Jackson, J. R. | SA |
| Leach, A. J. | SN | Wilkerson, J. P. | SN | Johnson, N. R. | SA |
| Leedy, R. W. | SN | Wilson, J. E. | SN | Lindberg, R. P. | SA |
| Mahoney, T. J. | SN | Winger, G. V. | SN | Mauck, T. J. | SA |
| McCartney, G. C., Jr. | SN | Young, R. C. | SN | O'Brien, D. H. | SA |
| McGinnis, J. | SN | Brandick, J. A. | RMSA | O'Neal, N. T. | SA |
| McMullen, T. R. | SN | Cameron, M. | RDSA | Quigley, E. F. | SA |
| Michael, R. | SN | Dilts, E. T. | SMSA | Raecek, R. J. | SA |
| Miller, R. P. — | SN | Frale, W. C. | RMSA | Rhodes, R. D. | SA |
| Myricks, W. E. | SN | Grimes, W. A. | RDSA | Safford, J. F. | SA |
| Newton, F. R. | SN | Jagger, D. M. | SMSA | Spadgenske, W. W. | SA |
| Nichols, F. E. | SN | Luebeck, D. A. | SMSA | Tench, J. H. | SA |
| Norton, W. N. | SN | Mika, T. A. | RDSA | Tufts, R. H. | SA |
| Payne, G. D. | SN | Selig, R. N. | RDSA | Tylla, J. L. | SA |
| Pearsall, E. H. | SN | Witte, G. G. | RDSA | Weinstein, B. | SA |
| Riddling, H. B. | SN | Carner, M. A. | SA | White, J. R. | SA |
| Russell, R. J. | SN | Crim, J. R. | SA | Yorio, J. S. | SA |
| Sage, R. D. | SN | Evans, C. E. | SA | Van Wagner, K. E. | SA |

GUNNERY DEPARTMENT

| | | | | | |
|-------------------|-----|------------------|-----|-------------------|-----|
| Alsop, L. F. | BM1 | Byrne, H. G. | BM2 | Vanderford, E. E. | BM2 |
| Campbell, J. A. | BM1 | Clark, R. R. | GM2 | Wooldridge, T. D. | GM2 |
| Crane, R. L. | FT1 | Cotney, D. M. | BM2 | Becoat, A. | BM3 |
| Dockery, W. | BM1 | Farrell, J. F. | BM2 | Carpenter, L. W. | BM3 |
| Force, D. R. | GM1 | Fromme, T. | FT2 | Clemmons, D. K. | BM3 |
| Hoe, H. B. | GS1 | Gonzales, J. P. | FT2 | Dailey, D. E. | FT3 |
| Holman, J. N. | FT1 | Harbin, G. B. | GM2 | Esielionis, F. A. | FT3 |
| Ivey, W. | BM1 | Jedrezjek, J. F. | GM2 | Helton, R. C. | GM3 |
| Johnson, R. M. | GS1 | Klocloc, A. T. | GM2 | Hicks, D. J. | FT3 |
| Jordan, A. S. | GM1 | Lablanc, A. C. | GM2 | Hunter, M. A. | FT3 |
| Kolbenzer, C. H. | NW1 | Lott, I. S. | FT2 | Kessig, R. L. | FT3 |
| Krasinski, S. J. | BM1 | Mackinnon, C. L. | BM2 | Killinger, A. D. | YN3 |
| Larson, P. A. | GM1 | McAndrew, J. F. | BM2 | King, J. W. | BM3 |
| Lewis, M. H. | BM1 | Martin, E. E. | FT2 | Marriner, J. B. | GS3 |
| Middaugh, H. V. | FT1 | Mohr, R. A. | FT2 | Martin, B. R. | BM3 |
| Murray, M. | GM1 | Newman, K. D. | FT2 | Martino, G. I. | GS3 |
| Paskiewick, R. G. | BM1 | Oberg, C. T. | GS2 | Miller, R. R. | BM3 |
| Quigley, D. J. | FT1 | Orr, J. W. | NW2 | Minnick, R. A. | FT3 |
| Randolph, H. W. | FT1 | Parra, R. R. | GM2 | Montgomery, N. E. | FT3 |
| Rives, A. E. | FT1 | Pitman, E. L. | BM2 | Mueller, R. E. | FT3 |
| Stewart, E. G. | GS1 | Spiller, C. A. | GM2 | Notini, E. J. | BM3 |
| Thompson, F. P. | BM1 | Stairs, W. R. | BM2 | Osterhout, D. J. | FT3 |
| Bowen, F. E. | GM2 | Sullivan, A. F. | FT2 | Pappas, D. R. | BM3 |
| Brumit, D. L. | GS2 | Titus, M. H. | GM2 | Peck, D. T. | FT3 |
| Burch, R. D. | FT2 | Stengle, R. F. | BM2 | Retzius, T. A. | BM3 |

GUNNERY DEPARTMENT (Continued)

| | | | | | |
|-------------------|------|---------------------|----|-------------------|----|
| Rowell, L. K. | BM3 | Ball, G. E. | SN | McCoy, C. L. | SN |
| Santella, T. | BM3 | Baker, W. H. | SN | McEachern, K. H. | SN |
| Smith, J. O. | BM3 | Bare, R. V. | SN | McKinnon, M. E. | SN |
| Tutka, H. A. | BM3 | Beasley, J. M. | SN | McNamara, R. J. | SN |
| Walls, R. B. | BM3 | Blankensopp, W. L. | SN | Miller, R. P. | SN |
| Waltman, G. J. | BM3 | Blongren, J. R. | SN | Misser, B. R. | SN |
| Williams, J. E. | BM3 | Botts, D. R. | SN | Moneymaker, J. W. | SN |
| Wilson, E. J. | BM3 | Bronk, C. M. | SN | Morris, F. T. | SN |
| Yannotti, F. C. | FT3 | Brown, H. A. | SN | Noonan, J. F. | SN |
| Young, W. A. | BM3 | Buchwald, R. | SN | Ockerman, B. L. | SN |
| Aldrich, J. S. | GSSN | Cahoon, M. E. | SN | O'Dell, J. U. | SN |
| Antinore, J. S. | FTSN | Carter, T. M. | SN | O'Donnell, J. J. | SN |
| Bailey, L. E. | NWSN | Ceseri, A. J. | SN | Offord, E. | SN |
| Banks, J. M. | FTSN | Chappel, W. A. | SN | Pevey, C. E. | SN |
| Bills, R. B. | GSSN | Chipman, B. P. | SN | Pearce, C. E. | SN |
| Boring, J. W. | GSSN | Clift, G. W. | SN | Porter, L. M. | SN |
| Brewster, D. R. | FTSN | Connell, L. A. | SN | Ray, R. E. | SN |
| Caldwell, R. H. | FTSN | Coski, J. A. | SN | Recker, R. T. | SN |
| Cantrell, R. B. | FTSN | Cournoyer, R. H. | SN | Reedy, I. W. | SN |
| Coleman, L. B. | GSSN | Craw, L. A. | SN | Robbs, G. N. | SN |
| Cook, J. D. | GSSN | Davis, A. C. | SN | Robey, F. H. | SN |
| Copeland, D. H. | FTSN | Davis, E. G. | SN | Robichaud, J. D. | SN |
| Dailey, I. L. | FTSN | Degroen, G. J. | SN | Robinette, B. G. | SN |
| Dailey, J. D. | GMSN | Dissell H. J. | SN | Robinson, R. T. | SN |
| Harden, G. N. | GSSN | Dotz, R. E. | SN | Rodriguez, R. E. | SN |
| Eyer, F. E. | GSSN | Dornisch, L. V. | SN | Rose, A. N. | SN |
| Holmgren, J. A. | GSSN | Dupay, J. P. | SN | Samaco, J. M. | SN |
| Kirwan, P. M. | FTSN | Forthun, V. R. | SN | Sarnes, G. T. | SN |
| Krajesky, W. | GSSN | Francis, J. C. | SN | Schuman, W. E. | SN |
| Lawrence, A. K. | NWSN | French, G. O. | SN | Scott, J. F. | SN |
| Malia, T. J. | BMSN | Fudler, C. A. | SN | Shuchman, J. A. | SN |
| Marley, J. A. | FTSN | Giebner, E. B. | SN | Stefan, W. | SN |
| McKnight, L. J. | FTSN | Glasco, L. W. | SN | Stelley, K. J. | SN |
| Melenski, E. I. | FTSN | Goeden, G. E. | SN | Taylor, W. P. | SN |
| Nash, J. L. | GMSN | Goldberg, R. M. | SN | Touchton, C. E. | SN |
| Raper, J. H. | FTSN | Greening, B. R. | SN | Vohs, A. V. | SN |
| Reichert, W. T. | GSSN | Gretak, J. M. | SN | Waits, F. R. | SN |
| Sears, J. E. | FTSN | Groth, R. J. | SN | Wilber, W. A. | SN |
| Sogard, A. G. | GSSN | Guliford, R. W. | SW | Williams, R. W. | SN |
| Stacey, J. S. | GSSN | Halcomb, I. L. | SN | Wasilewski, E. M. | SN |
| Stamm, I. E. | GSSN | Hand, R. A. | SN | Augustine, F. F. | SA |
| Suter, J. H. | FTSN | Helmintoller, W. M. | SN | Austin, F. D. | SA |
| Thompson, J. R. | FTSN | Herron, R. L. | SN | Baranaskas, A. J. | SA |
| Webber, D. G. | BMSN | Honick, R. S. | SN | Bellow, H. E. | SA |
| Williamson, L. L. | GSSN | Johnson, F. E. | SN | Betts, R. | SA |
| Wilson, G. L. | NWSN | Johnson, J. E. | SN | Berube, A. J. | SA |
| Wood, T. M. | FTSN | Keohane, M. F. | SN | Blaon, P. P. | SA |
| Yaden, G. J. | NWSN | Levesque, A. T. | SN | Brewer, B. D. | SA |
| Yaden, H. Q. | NWSN | Logue, J. K. | SN | Carter, J. H. | SA |
| Allard, J. A. | SN | Mangarell, D. M. | SN | Commons, C. A. | SA |
| Austin, L. W. | SN | Mayfield, B. J. | SN | Davis, T. L. | SA |

GUNNERY DEPARTMENT (Continued)

| | | | | | |
|-----------------|----|-----------------|----|-------------------|----|
| Driver, L. A. | SA | Murtha, T. M. | SA | Slusher, R. E. | SA |
| Eaton, J. E. | SA | Newman, D. G. | SA | Smith, E. D. | SA |
| Enders, R. W. | SA | Noe, A. M. | SA | Smith, R. C. | SA |
| Fisette, N. L. | SA | Noe, R. C. | SA | Smith, R. C. | SA |
| Fowler, W. E. | SA | Nixon, M. R. | SA | Spych, T. E. | SA |
| Fox, J. T. | SA | Orman, J. E. | SA | Staniewicz, W. H. | SA |
| Freeman, M. D. | SA | Parkin, J. H. | SA | Tintle, J. E. | SA |
| Gray, J. P. | SA | Peot, K. L. | SA | Verdier, J. W. | SA |
| Grubb, J. R. | SA | Perry, W. M. | SA | Vinchina, R. E. | SA |
| Hayworth, W. D. | SA | Phillips, J. T. | SA | Wagner, L. P. | SA |
| Huyghue, R. | SA | Pound, J. P. | SA | Wall, F. T. | SA |
| Johnson, W. L. | SA | Proscott, W. | SA | Wallace, R. L. | SA |
| Kasey, G. W. | SA | Previs, C. A. | SA | Ward, G. L. | SA |
| Kent, R. S. | SA | Price, C. G. | SA | Webb, J. C. | SA |
| Kinnee, M. L. | SA | Puryear, G. T. | SA | Wells, P. D. | SA |
| Lynch, T. R. | SA | Quarles, O. L. | SA | Wells, R. L. | SA |
| Lyon, E. F. | SA | Repasy, L. E. | SA | Wels, W. L. | SA |
| Manus, C. N. | SA | Rimel, P. C. | SA | Wheeler, J. E. | SA |
| Martin, C. E. | SA | Robbins, F. L. | SA | Williams, D. A. | SA |
| Mathews, F. T. | SA | Robidoux, F. V. | SA | Williams, D. A. | SA |
| Matone, J. P. | SA | Rost, E. H. | SA | Williams, C. E. | SA |
| Maynard, R. C. | SA | Rubin, L. A. | SA | Wolfe, H. J. | SA |
| McMahon, M. F. | SA | Settles, J. E. | SA | Wood, H. E. | SA |
| Miller, G. D. | SA | Shoeberg, D. W. | SA | Wyke, W. S. | SA |
| Moorman, P. L. | SA | Shultz, M. R. | SA | Wilson, I. L. | SR |
| Murphy, J. M. | SA | Slater, F. J. | SA | | |

NAVIGATION DEPARTMENT

| | | | | | |
|---------------|------|----------------|------|--------------------|----|
| Cropf, W. J. | QM1 | Voges, V. E. | QMSA | Loeblein, C. J. | SA |
| Kunze, A. W. | QM2 | Bridges, D. J. | SA | Magill, C. E. | SA |
| Sauter, F. | QM3 | Doherty, J. W. | SA | Petchalonis, A. T. | SA |
| Early, D. S. | QMSN | Durrin, L. H. | SA | Richardson, S. E. | SA |
| Wilson, H. R. | QMSN | Harris, W. H. | SA | Steele, J. R. | SA |
| Wilson, D. | SN | Klein, A. B. | SA | | |
| Powers, J. | QMSA | Larivey, C. E. | SA | | |

ENGINEERING DEPARTMENT

| | | | | | |
|------------------|-----|----------------------|------|-----------------|------|
| Berlin, P. E. | BT1 | Serena, J. J., Jr. | BT1 | Carter, J. N. | BT2 |
| Bierman, J. | BT1 | Smith, G. J. | IC1 | Connel, E. | MM2 |
| Campbell, W. L. | MM1 | White, R. E. | MM1 | Covert, R. M. | BT2 |
| Flanigan, J. R. | SF1 | Whitney, C. R. | BT1 | Davis, M. K. | MM2 |
| Galipeca, R. J. | MR1 | Wright, J. S. | MM1 | Duncan, B. J. | BT2 |
| Georgie, D. R. | DC1 | Anderson, C. E. | EN2 | Elliot, R. J. | SFM2 |
| Grondin, W. J. | EM1 | Anderson, E. L., Jr. | EM2 | Gates, E. G. | DC2 |
| Hammond, M. E. | BT1 | Bassham, B. R. | EM2 | Goodman, C. H. | EM2 |
| Lewis, H. | SF1 | Blanchard, C. G. | EN2 | Harrison, S. M. | IC2 |
| Mariano, J. P. | SF1 | Blomquist, G. L. | EM2 | Jepko, Z. L. | MM2 |
| Martz, W. C. | EN1 | Bonner, J. P. | MM2 | Knight, R. B. | BT2 |
| Mountain, H. J. | MM1 | Brooks, J. M. | MM2 | Latimore, R. | DC2 |
| Raymond, H. A. | DC1 | Brown, E. J. | SFP2 | Listar, L. P. | BT2 |
| Robertson, J. B. | MM1 | Carrol, A. D. | MM2 | McKerley, S. J. | EM2 |

ENGINEERING DEPARTMENT (Continued)

| | | | | | |
|-----------------------|------|-----------------------|------|------------------------|-------|
| Moore, T. J. | BT2 | Reed, R. A. | IC3 | Digges, N. P. | FN |
| Pack, C. N. | BT2 | Reynolds, G. D. | BT3 | Dombrowski, J. | FN |
| Reichard, P. J. | EM2 | Rodgers, R. T. | MM3 | Fancher, B. N. | FN |
| Secora, F. W. | SFM2 | Salter, V. L., Jr. | EM3 | Fenton, D. L. | FN |
| Seitz, J. W. | EM2 | Spence, J. B. | EM3 | Gehlhausen, D. R. | FN |
| St. Onege, J. L. | IC2 | Stewart, J. T. | DC3 | Harrison, C. W., Jr. | FN |
| Thibodeau, J. R. | MM2 | Swanson, R. | SFM3 | Harrison, R. W., Jr. | FN |
| Vanderhorst, O. | MM2 | Thompson, W. E. | MM3 | Henke, K. | FN |
| Wells, R. F. | BT2 | Toothaker, G. L., Jr. | EM3 | Jeter, L. S. | FN |
| Whidden, J. A. | IC2 | Wascher, M. L. | PN3 | Johnson, J. E. | FN |
| Adams, W. H. | BT3 | Weber, E. E., Jr. | DC3 | Joseph, L. S. | FN |
| Akers, R. L. | EM3 | Williams, N. M. | BT3 | Kafka, P. S. | FN |
| Barrows, R. W. | EN3 | White, L. R. | EN3 | Lantaff, D. W. | FN |
| Beardsley, F. G. | EN3 | Allen, E. | ENFN | Lowe, S. W. | FN |
| Bellis, N. | MM3 | Barnhardt, J. M., Jr. | MMFN | Maiorano, V. F. | FN |
| Besancon, D. H. | EM3 | Beason, R. G. | MMFN | Maslo, J. M. | FN |
| Bowden, A. H. | EM3 | Bianchi, D. | BTFN | Mehaulik, F. E. | FN |
| Bradford, G. R. | EM3 | Brown, G. M. | ENFN | Montgomery, E. L., Jr. | FN |
| Brotherton, C. H. | DC3 | Case, G. L. | BTFN | Morrissey, R. E. | FN |
| Cannon, J. R. | MM3 | Catena, J. W. | MMFN | Morton, J. E., Jr. | FN |
| Carpenter, R. L. | EM3 | Coen, N. A. | MMFN | Nichols, C. D. | FN |
| Craft, J. E. | MM3 | Comerford, R. R. | ICFN | Pacitti, R. J. | FN |
| Dober, J. B., Jr. | EM3 | Franklin, J. A. | EMFN | Palmocci, L. | FN |
| Dougherty, V. J., Jr. | EM3 | Gilbert, U. L. | ICEN | Peluso, W. R. | FN |
| Ethridge, R. G. | BT3 | Glaub, J. L. | BTFN | Reeve, J. A. | FN |
| Engle, K. E. | IC3 | Hebblewaite, D. W. | MRFN | Rheaume, L. A. | FN |
| Feichert, G. O. | EM3 | Holsomback, T. W. | MMFN | Ritter, E. G. | FN |
| Fjeld, J. A. | MM3 | Huff, K. E. | ICFN | Rochford, J. J. | FN |
| Franklin, R. W., Jr. | EN3 | Kirk, B. A. | ENFN | Rousseau, H. R., Jr. | FN |
| Gagnon, L. A. | EN3 | Lauffer, W. E. | MMFN | Seneff, R. G. | FN |
| Gilbert, C. W. | EN3 | Marshall, J. E. | EMFN | Sivula, J. W. | FN |
| Gray, L. T. | SFP3 | Meek, M. R. | MMFN | Skidmore, R. A. | FN |
| Griffith, R. L. | EM3 | Morgan, J. E., Jr. | MMFN | Stamp, W. L. | FN |
| Grisham, R. D., Jr. | MM3 | Oken, R. D. | MMFN | Stier, J. A. | FN |
| Hayes, E. | MM3 | Parks, H. F. | EMFN | Stokes, M. J. | FN |
| Hinckley, R. G. | IC3 | Parnin, D. L. | MMFN | Strickenberger, B. | FN |
| Hudson, G. C. | EM3 | Peterson, R. M. | MMFN | Tolerico, J. R. | FN |
| Jones, J. W. | BT3 | Picker, D. R. | ICFN | Vanderhall, J. L. | FN |
| Jennings, J. N. | EM3 | Ready, D. W. | ICFN | Van Duesen, W. J. | FN |
| Johnson, C. H. | IC3 | Rousseau, A. J. | MMFN | Wallace, E. C. | FN |
| Kesler, J. W. | MM3 | Shuey, G. S. | ICFN | Williams, J. R. | FN |
| Mabrito, J. B. | IC3 | Simmons, D. G. | MMFN | Young, R. A. | FN |
| Micael, R. J. | EM3 | Stines, L. D. | MMFN | Youtsey, I. J. | FN |
| Morris, J. G. | YN3 | Thurman, A. J. | MMFN | Carty, D. R. | BTFA |
| Morris, J. G. | MM3 | Weiler, T. K. | MMFN | Cal, A. K. | ICFA |
| Morris, T. | BT3 | Atkinson, R. E. | FN | Conroy, M. A. | SFMFN |
| Mosey, K. F. | IC3 | Baker, D. D. | FN | Cyrulik, M. L. | EMFA |
| Pascarella, K. A. | BT3 | Beale, A. M. | FN | Finochio, J. R. | EMFA |
| Patton, C. E. | BT3 | Belanger, R. M. | FN | Frank, K. N. | EMFA |
| Pearson, W. A. | DC3 | Bobeck, R. P. | FN | Fritz, R. H. | MMFA |
| Petig, R. B. | EM3 | Cannon, C. F. | FN | Gautiero, R. A. | SFPFA |
| Pittman, V. | EM3 | Carrington, D. L. | FN | Henry, D. A. | BTFA |
| Pomicter, C. J. | MM3 | Colangelo, J. | FN | Kessinger, A. | MMFA |
| Pounds, R. N. | IC3 | Cullom, C. M. | FN | Larkin, J. W. | BTFA |
| Randa, J. J. | MR3 | Dattilo, J. M. | FN | McDaniel, J. L., Jr. | EMFA |

ENGINEERING DEPARTMENT (Continued)

| | | | | | |
|----------------------|------|--------------------|----|----------------------|----|
| Stahl, E. | ICFA | Froehlich, J. A. | FA | Roberts, A. D. | FA |
| Tonkovich, R. J. | MMFA | Galati, V. | FA | Roberts, C. E. | FA |
| Ackerman, J. J. | FA | Grubbs, D. F. | FA | Rush, D. L. | FA |
| Adams, R. A. | FA | Gwilliams, W. E. | FA | Saarinen, J. A. | FA |
| Adkins, T. D. | FA | Hammond, D. L. | FA | Sampson, W. T. | FA |
| Ashley, R. L. | FA | Harvey J. E. | FA | Sarn, T. J., Jr. | FA |
| Avery, G. E. | FA | Henry, T. R. | FA | Sauerwein, J. H., II | FA |
| Aylmer, D. H. | FA | Herbstritt, T. E. | FA | Schimmelmann, J. J. | FA |
| Barnes, W. W. | SA | Heubusch, R. J. | FA | Schlosser, A. F. | FA |
| Barry, J. W. | FA | Hollis, A. L. | FA | Schultz, K. A. | FA |
| Baumgardner, R. L. | FA | Howard, E. D. | FA | Schutt, R. A. | FA |
| Baumler, R. D. | FA | Huggard, D. A. | FA | Scott, R. H. | FA |
| Beaver, S. O. | FA | Imhoff, E. F. | FA | Sechler, R. A., Jr. | FA |
| Bell, D. E. | FA | Irwin, G. M. | FA | Seitz, D. L. | FA |
| Black, R. D. | FA | Isser, R. | FA | Seiverling, J. E. | FA |
| Bott, R. T. | FA | Kallen, D. E. | FA | Skamiera, T. C. | FA |
| Brodman, R. | FA | Keays, G. M. | FA | Smeltzer, B. A. | FA |
| Bryant, D. L. | SA | Kerr, H. C. | FA | Smeltzer, R. E. | FA |
| Carbaugh, D. E. | FA | Kronk, H. E. | FA | Smiley, E. L. | FA |
| Carey, W. C. | FA | Langdon, J. A. | FA | Smith, D. I. | FA |
| Clary, W. E. | FA | Laskowski, R. T. | FA | Smith, D. L. | FA |
| Clements, G. J., Jr. | FA | Losby, B. H. | FA | Snyder, A. F., Jr. | FA |
| Colasurdo, A. J. | FA | McClellan, R. A. | FA | Soussa, G. S. | FA |
| Cook, S. G. | FA | McClees, E., Jr. | FA | Spahn, M. M. | FA |
| Copier, J. L. | FA | McElhanney, H. D. | FA | Stobo, T. C., Jr. | FA |
| Covini, P. J., Jr. | FA | McFarland, G. J. | FA | Teague, H. B., Jr. | FA |
| Crawford, J. W. | FA | Merriman, F. G. | FA | Tekulve, R. B. | FA |
| Crummey, J. T. | FA | Midling, R. J. | FA | Tenny, R. F. | FA |
| Cummings, A. D. | FA | Moore, L. O. | FA | Thibault, R. H. | FA |
| Darby, J. R., | FA | Monroe, J. L. | FA | Thomas, W. | FA |
| Davis, E. L. | FA | Oldson, C. H. | FA | Thomas, D. L. | FA |
| Dauids, J. J., Jr. | FA | Orzechowski, E. J. | FA | Thompson, G. F. | FA |
| Delude, R. F. | FA | Owen, J. A. | FA | Ulmer, L. H., Jr. | FA |
| Dionne, A. G. | FA | Pawelchak, R. M. | FA | Walker, J. A. | FA |
| Dingus, D. E. | FA | Plowman, R. E. | FA | Ward, A. E., Jr. | FA |
| Dinolfo, S. | FA | Reed, W. J. | FA | Watson, W. B. | FA |
| Emery, R. C. | FA | Rembish, E., Jr. | FA | Weaver, I. H., Jr. | FA |
| Feighan, P. J. | FA | Ribar, J. R. | FA | White, B. G. | FA |
| Fifield, H. E. | FA | Richards, H. T. | FA | Workman, A. E., Jr. | FA |
| Foster, B. M. | FA | Riddle, E. F. | FA | Yannie, P. M. | FA |
| Fowler, R. J. | FA | Rienhardt, G. J. | FA | Zantuhos, G. H. | FA |
| Fox, G. J. | FA | Rienhardt, P. W. | FA | Zarachowicz, J. J. | FA |
| Fox, J. A. | A | Riley, M. D. | FA | | |

SUPPLY DEPARTMENT

| | | | | | |
|-------------------|-----|-------------------|-----|----------------------|-----|
| Babine, C. A. | CS1 | Lightfoot, G. A. | SD1 | Druckenmiller, R. A. | CS2 |
| Bailey, S. R. | SH1 | Piemontese, M. D. | SH1 | Engram, M. | SD2 |
| Bungcayao, A. G. | SD1 | Riser, D. | SD1 | Gardner, J. L. | CE2 |
| Coppedge, W. F. | SD1 | Rodgers, R. H. | CS1 | Gauthier, H. C. | SK2 |
| Davis, S. C. | CS1 | Tracy, E. G. | CS1 | Hitt, E. F. | DK2 |
| Dixon, I. E. | SK1 | Webster, R. A. | SK1 | Landgraf, F. J. | SK2 |
| Ewell, J. W., Jr. | SH1 | Adams J. B. | SH2 | Parrish, A. J. | SK2 |
| Godlewski, J. C. | SH1 | Crawford, H. | SD2 | St. Jacques, J. R. | SH2 |
| Jerkins, S. | SD1 | Crossling, H. F. | SH2 | Sandlie, B. P. | SH2 |
| Jones, J. S. | AK1 | Dobson, C. L. | SH2 | Sellers, R. R. | CS2 |

SUPPLY DEPARTMENT (Continued)

| | | | | | |
|---------------------|------|----------------------|------|----------------------|----|
| Taylor, C. W. | CS2 | Ladrig, M. J. | CSSN | Mullins, B. J. | SN |
| West, R. J. | SK2 | Leighton, J. B. | SKSN | Ordazzo, R. W. | SN |
| White, T. A. | CS2 | Lowery, W. M. | SHSN | Palm, J. | TN |
| Wilson, I., Jr. | SD2 | Ursery, R. L. | CSSN | Penrod, E. G. | SN |
| Armour, D. R. | CS4 | Valkos, G. M. | SKSN | Peralta, E. | TN |
| Bernich, A. A. | CS3 | Vernaci, N. V. | SKSN | Roberts, S. J. | SN |
| Brock, A. | SD3 | Warren, J. M. | CSSN | St. Germain, P. E. | SN |
| Browning, M. I. | CS3 | Adams, R. J. | SN | Shopherd, R. W. | SN |
| Cain, R. D. | SH3 | Angos, V. S. | TN | Troy, W. D. | TN |
| Carwile, R. E. | SH3 | Barros, J. S. | TN | Vanyo, J. P. | SN |
| Chatman, R. L. | SD3 | Bell, R. | TN | Walker, W. F. | TN |
| Edwards, C. H., Jr. | CS3 | Bradbury, M. L. | SN | Wallace, L. F. | SN |
| Gray, R. L. | SK3 | Brown, W. G. | SN | Yevick, J. R. | SN |
| Greer, J. L. | SH3 | Buotte, B. A. | SN | Adkins, L. | SA |
| Gurley, J. R. | CS3 | Cain, R. E. | SN | Calvert, J. A. | SA |
| Hocking, R. E. | SK3 | Carson, R. L. | SN | Clark, R. S. | SA |
| Johnson, J. | SH3 | Chisolm, M. C. | SN | Dandridge, R. E. | SA |
| Jones, K. | SK3 | Collins, M., Jr. | TN | Donaldson, W. C. | SA |
| Jorgenson, C. G. | CS3 | Curtin, J. J. | SN | Giroux, H. V. | SA |
| Lewis, F. L. | SD3 | DelGuidice, J. B. | SN | Kays, K. E. | SA |
| Littles, E. | SD3 | Dobbins, W. D. | TN | Kelley, D. N. | SA |
| Martin, N. E. | CS3 | Dunbar, H. D., Jr. | TN | Lombardo, W. C. | SA |
| McCarter, C. F. | SH3 | Ernst, R. P. | SN | Martin, G. L. | SA |
| Moore, B. G. | SK3 | Galloway, R. C. | SN | Master, G. D. | SA |
| Neiderffer, R. L. | SH3 | Garrett, C., Jr. | TN | McMickle, J. M. | TA |
| Odegaard, R. A. | CS3 | Green, D. O. | SN | Ramsey, M. R. | SA |
| Renfroe, A. E. | CS3 | Haugstad, R. D. | SN | Rose, A. W., Jr. | SA |
| Rulong, G. L. | SK3 | Helmbrecht, W. | SN | Saig, S. F. | SA |
| Schultz, J. J. | SK3 | Kane, L. E. | SN | Towers, W. B. | SA |
| Suttles, R. R. | CS3 | Kempf, J. A. | SN | Vanlue, J. | TA |
| Thomas, J. D. | SH3 | Lees, P. W. | SN | Vengas, B. D. | SA |
| Thompson, R. N. | SK3 | Leitch, F. | SN | Welchman, A. E., Jr. | SA |
| Wood, L. O. | SK3 | McDaniel, T. L., Jr. | SN | Wheeler, R. D. | SA |
| Brown, G. L. | CSSN | Melvin, B. B. | TN | Zimmerman, P. E. | SA |
| Cheatham, G. D. | DKSN | Meyers, E. L. | SN | | |
| Deveny, L. K. | SKSN | Miller, W. D. | SN | | |

MEDICAL DEPARTMENT

| | | | | | |
|--------------------|-----|----------------------|-----|----------------|----|
| Armour, J. L. | HM1 | Semple, L. A. | HM2 | Wallace, D. E. | HN |
| Benson, J. P. | DT1 | Stewart, L. P. | HM2 | Gillham, W. M. | SN |
| Marks, E. L. | HM1 | Brundage, R. M. | HM3 | Hope, J. D. | SN |
| Barton, S. L., Jr. | HM2 | Garcia, C., Jr. | HM3 | Ivory, W. J. | SN |
| Farley, C. A. | HM2 | Pressley, G. W., Jr. | HM3 | | |

MARINE DETACHMENT

| | | | | | |
|-------------------|--------|---------------------|-----|------------------|-----|
| James, F. J. | AMSgt. | Bell, E. W. | PFC | Lusa, P. F. | PFC |
| Smith, A. G., III | ASSgt | Brennan, J. P., Jr. | PFC | Oakley, J. L. | PFC |
| Robertson, C. R. | ASgt | Byers, D. R. | PFC | Pankuch, M. | PFC |
| Tolbert, L. | ASgt | Clayton, R. M. | PFC | Patterson, W. D. | PFC |
| Hewitt, J. A. | CPL | Cobb, C. W. | PFC | Powel, C. C. | PFC |
| Minick, T. R. | CPL | Crandell, C. M. | PFC | Roberts, R. C. | PFC |
| Clark, G. W. | LCpl | Geer, E. D. | PFC | Sumpter, R. W. | FC |
| Guilbert, J. D. | LCpl | Guliano, P. J., Jr. | PFC | Wilhelm, R. H. | PFC |
| Kelly, T. J. | LCpl | Hollis, J. | PFC | Skoletsky, P. | PVT |
| O'Brien, J. F. | LCpl | Hyde, R. T. | PFC | Voltaggio, V. H. | PVT |
| Arthur, R. A. | PFC | Kelley, M. L. | PFC | | |
| Attinger, A. S. | PFC | Luffred, P. T. | PFC | | |

